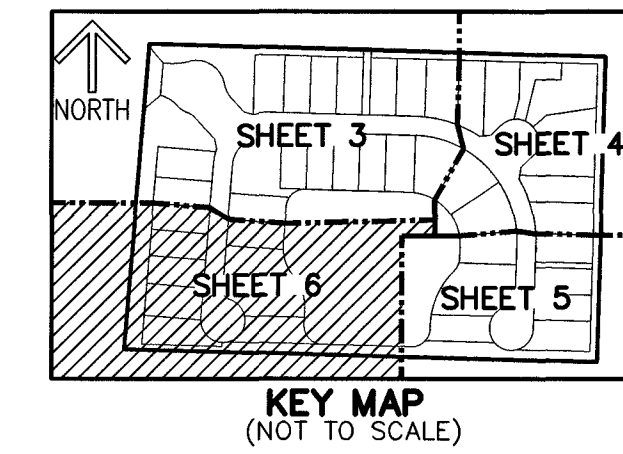
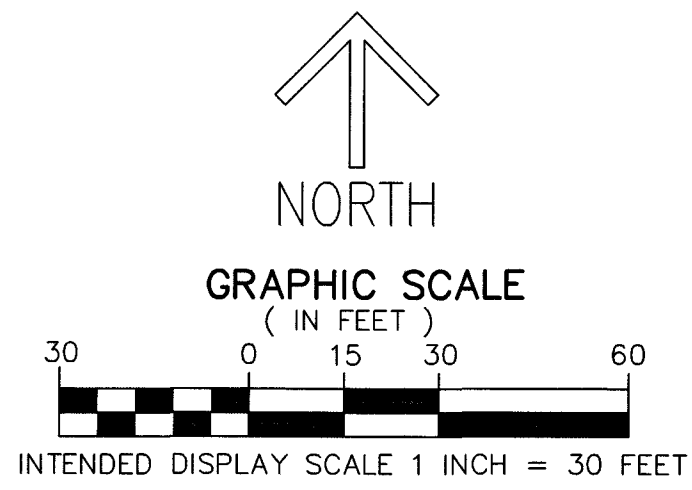


CANTER

A REPLAT OF A PORTION OF TRACT "A", ST. THERESE DE LISIEUX, RECORDED IN PLAT BOOK 97, PAGES 185 AND 186 OF THE PUBLIC RECORDS OF PALM BEACH COUNTY, FLORIDA LYING IN SECTION 26, TOWNSHIP 44 SOUTH, RANGE 41 EAST, VILLAGE OF WELLINGTON, PALM BEACH COUNTY, FLORIDA

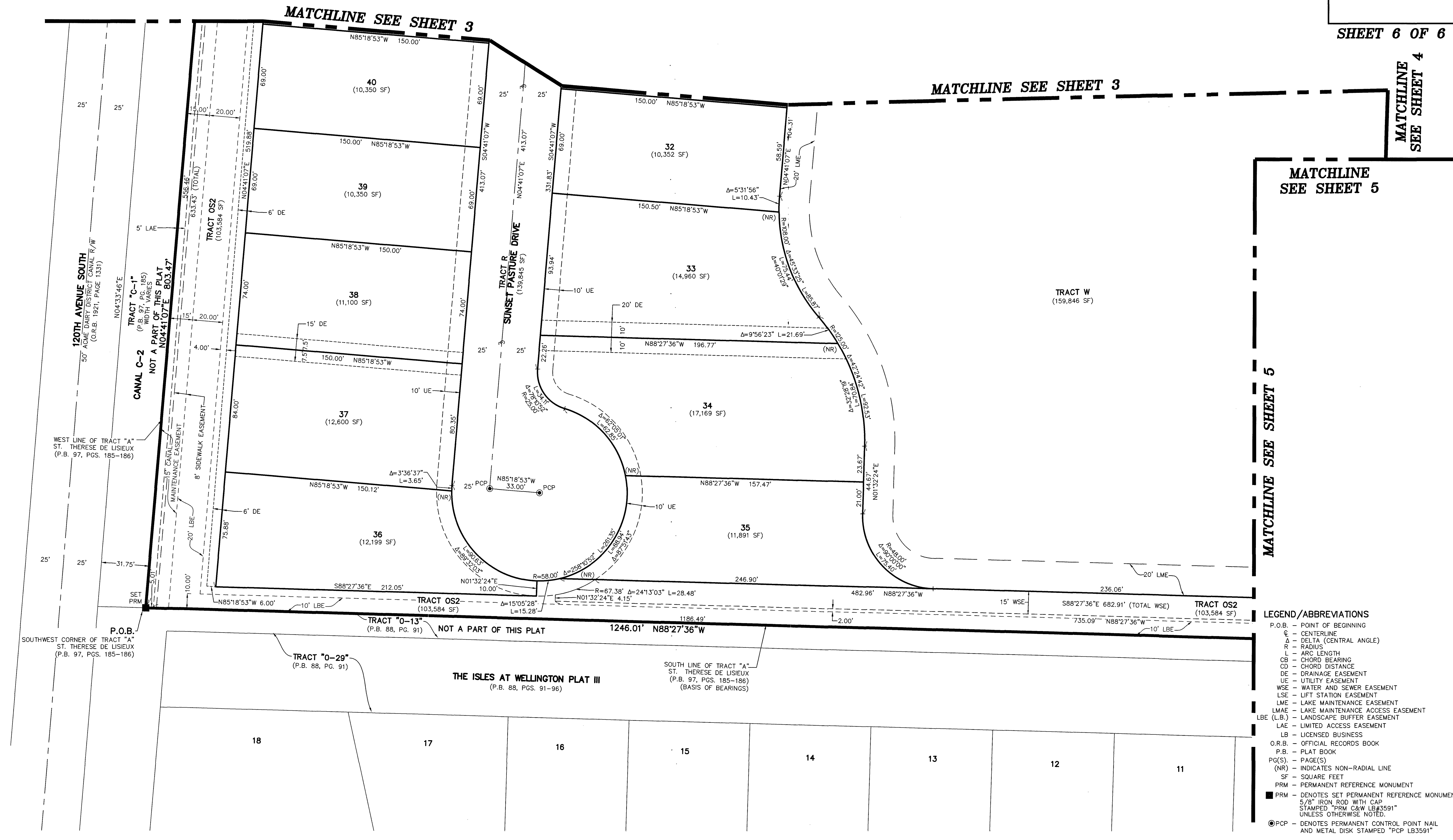
THIS INSTRUMENT PREPARED BY
DAVID P. LINDLEY

OF
CAULFIELD & WHEELER, INC.
SURVEYORS - ENGINEERS - PLANNERS
7900 GLADES ROAD, SUITE 100
BOCA RATON, FLORIDA 33434 - (561)392-1991
CERTIFICATE OF AUTHORIZATION NO. LB3591
NOVEMBER - 2026



33

SHEET 6 OF 6



- MATCHLINE SEE SHEET 5**
- LEGEND/ABBREVIATIONS**
- P.O.B. - POINT OF BEGINNING
 - C - CENTERLINE
 - Δ - DELTA (CENTRAL ANGLE)
 - R - RADIUS
 - L - ARC LENGTH
 - CB - CHORD BEARING
 - CD - CHORD DISTANCE
 - DE - DRAINAGE EASEMENT
 - UE - UTILITY EASEMENT
 - WSE - WATER AND SEWER EASEMENT
 - LSE - LIFT STATION EASEMENT
 - LME - LAKE MAINTENANCE EASEMENT
 - LMAE - LAKE MAINTENANCE ACCESS EASEMENT
 - LBE (L.B.) - LANDSCAPE BUFFER EASEMENT
 - LAE - LIMITED ACCESS EASEMENT
 - LB - LICENSED BUSINESS
 - O.R.B. - OFFICIAL RECORDS BOOK
 - P.B. - PLAT BOOK
 - PG(S). - PAGE(S)
 - (NR) - INDICATES NON-RADIAL LINE
 - SF - SQUARE FEET
 - PRM - PERMANENT REFERENCE MONUMENT
 - - DENOTES SET PERMANENT REFERENCE MONUMENT 5/8" IRON ROD WITH CAP STAMPED "PRM C&W LB3591" UNLESS OTHERWISE NOTED.
 - PCP - DENOTES PERMANENT CONTROL POINT NAIL AND METAL DISK STAMPED "PCP LB3591"